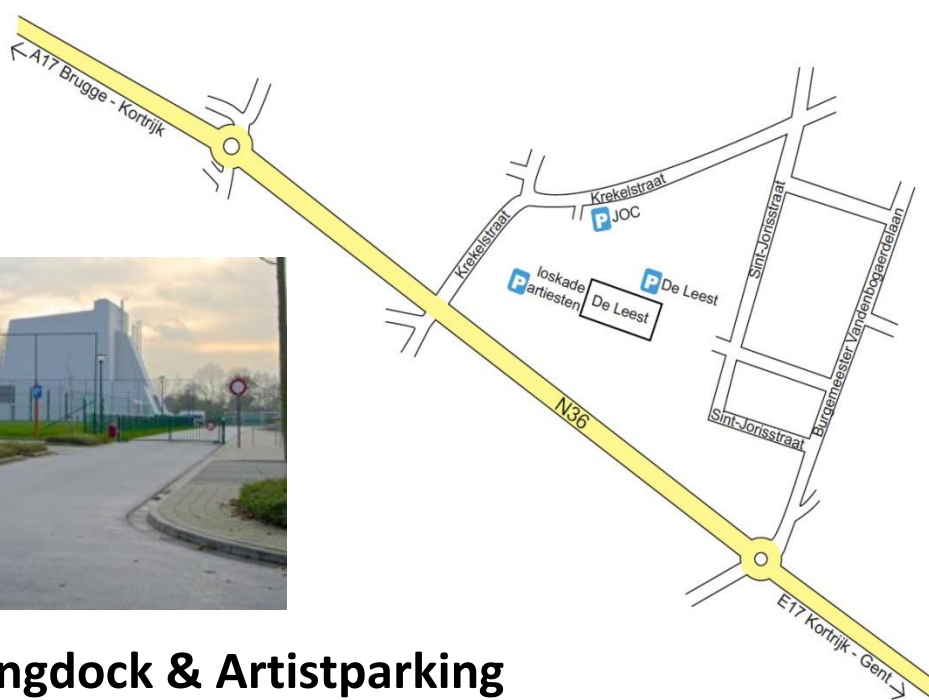


# Technical Rider – De Leest

## How to get to the loading dock



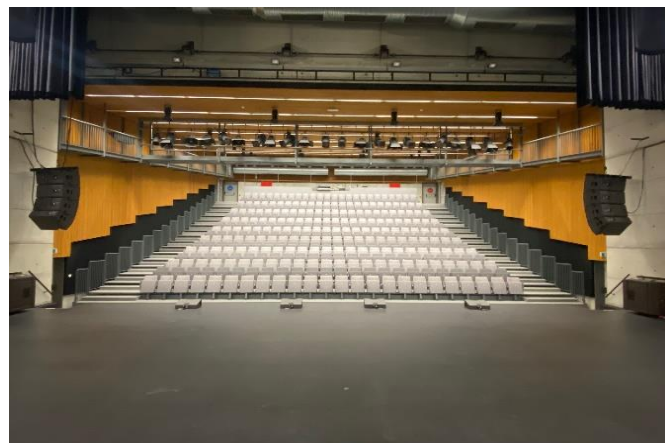
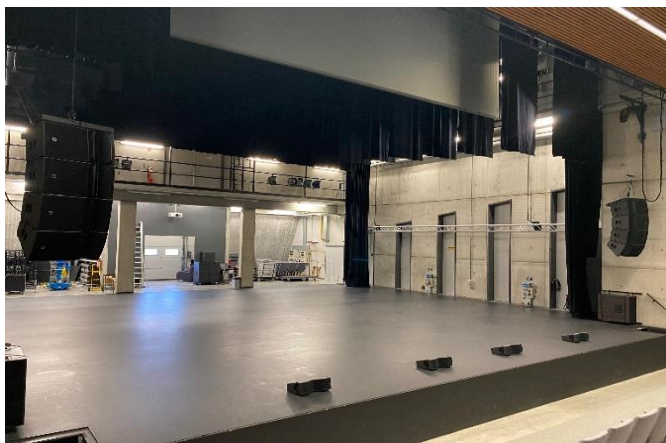
## Loadingdock & Artistparking

NOT accessible via the Sint-Jorisstraat or parking in front of the building  
WELCOME along the parking next to "JOC De Tunne".

**GPS: Krekelstraat 167, 8870 Izegem**

You can open the gate by calling +32 (0)473/86.43.15

- **Responsible technician Venue:** Jan Vanderschaeve  
[techniek@deleest.be](mailto:techniek@deleest.be) or +32(0)51/337.612 (please give preference to e-mail)



## Venue Description

### Capacity audience

- Seated
  - A maximum of 456 seats, 24 seats per row
    - Row A is very close to the stage and is always sold last.
    - For wheelchair users, the seats of row A & B must be removed
    - This can be done in blocks of 3 seats per row: 6 seats = space for 2 wheelchairs.
- Standing
  - 650 maximum
    - depending on the decoration of the room (bar, tables, etc.)

### Stage

- Black painted wood floor (load capacity 500 kg /m<sup>2</sup>)
- Black or white ballet floor by request (8 strips of 1.5m x 15m) (**only for dance performances**)
- Stage opening 14.7 m x 6.75 m
- Legs at 10m width
- Side black on rail on 14.7 m width
- Between the side walls 16.8m
- Edge of stage to front curtain (= front scene) 2.1 m
- Edge of podium to black backdrop 13.8 m

### Textile

- Front curtain opens manually with pulley system on rail, control on stage right
- Front curtain opens to maximum of 11m
- Backcurtain cloth is identical to the front cloth including pulley system
- Retro projection screen 11m x 6.5m (Fixed on flybar 8, possible to wind up if needed)
- Black gauze cloth 7m x14m
- 2 x 6 legs 2m x 7.5m
- 4 friezes 1.4 m high
- 2 friezes 2.5 m high
- 2 x 5 side black 3m x 7m with velcro
- 6 x black molton 3m x 7m

## Rigging

- 33 computer-controlled flybars (Stalagic)
- 40 cm distance (25 cm between # 2, # 3 and # 4 and also between # 32 and # 33)
- Maximum speed 0.8 m / s
- Max load 300 kg per draw
- Max point load 150 kg per draw
- Each flybar is 14 m wide
- 2 x side trusses with manual hoist provided (max. 6m height)
- 4 x hoist point above edge of stage for speaker clusters

## Dressing Rooms

- There are 4 Dressing rooms, each with mirrors, sink, shower and toilet
  - 2 x 35m<sup>2</sup>
  - 2 x 28m<sup>2</sup>

# Technical Equipment

## Electricity

Total maximum 300A 3x400V for light and sound

- Light
  - 2 x 125A 3x400V / 5P CEE up stage left
  - 2 x 63A 3x400V / 5P CEE up stage left
  - 2 x 32A 3x400V / 5P CEE side bridge stage tower left
- Sound
  - 1 x 63A 3x400V / 5P CEE up stage left
  - 2 x 32A 3x400V / 5P CEE up stage left
  - 1 x 32A 3x400V / 5P CEE stage left
  - 4 x 20A schuko stage
  - 1 x 20A schuko FOH

## Light

- 144 x ADB eurorack dimmer of 3kW
  - 96 in Flybars
  - 24 on stage
  - 24 in the front bridge
- MA3 Compact
- Focus via Chamsys on PC
- 1 x hazer MDG ATme
- 8 x ballet tower height 2.5 m, suspension point at 1 m, 1.75 m and 2.5 m

- Conventional Light
    - 8 x ADB profile DS205 2000W 15 ° -36 ° with iris and gobo holder (type A)\*
    - 12 x ADB profile DS105 1200W 15 ° -31 ° with iris and gobo holder (type A)
    - 12 x ADB PC C203 2000W with barndoors\*
    - 24 x ADB PC C103 1200W with barndoors
    - 10 x ADB fresnel F101 1200W with barndoors
    - 15 x ADB horizon ACP1001 1000W
    - 34 x Thomas PAR 64 (variation on CP60, 61 and 62)
    - 6 x six bar Par 64 (6 x CP62)
- \*(only frontbridge)
- Intelligent Light
    - 12 x Chauvet Maverick MK2 Profile
    - 20 x Robe Ledbeam 150
    - 16 x M800 (2x7 in side trusses – 2x 1 in tower front stage)
    - 12x M800 (6x2 in small ballet tower)
    - 7 x ETC S4 series LUSTR.
  - Venue light
    - 24 Robin perfect S1 2700K

## Sound

- FOH
  - 2 x 4 L'Acoustics A15 (consisting of 3x Focus & 1x Wide)
  - 4 x L'Acoustics KS21 (in Theatre set up 1xKS21 per kant)
  - 4 x L'Acoustics Kiva INFILL on 2 lines
  - 3 x L'Acoustics LA4X
- Monitor
  - 12 x L'Acoustics 12XT
  - 3 x L'Acoustics LA4X
- Sound tables + outboard
  - Midas M32
  - Midas M32R
  - Midas Pro2C
  - Midas DL251 stagebox (48 in 16 uit) with analog passive split to LK or XLR
  - Tascam CD speler
  - Denon Blu-Ray speler
  - analog multi 8 in 8 uit (Between stage and FOH)

- Micro set
  - 6 x Shure SM58
  - 4 x Shure Beta58
  - 4 x Shure SM57
  - 1 x Shure SM87
  - 1 x Shure Beta 52
  - 1 x Sennheiser e602 II
  - 1x oktava MK012  
Cardoïde
  - 1 x Audix i5
  - 2 x Audix D2
  - 1 x Audix D4
  - 2 x Audix ADX51
  - 4 x Lewitt LCT441 Flex
  - 2x Sennheiser MD421
  - 2 x Sennheiser e609
  - 4 x Sennheiser e604
  - 2 x Sennheiser e614
  - 4 x Sennheiser wireless set met e845 OF beltpack met headset
  - 1 x Shure beta 58 Wireless

## Video

- Panasonic PT-RCQ10BEJ Laser projector 10.000 Ansi lumens (Lens 1.3-1.9:1)
  - projector is fixed on rear scene, only retro projection possible!
  - Only HDMI of DVI
- Sufficient HDMI kabel

### **Additional projectors – Available when needed**

- Optoma W515 6000 ANSI Lumens WXGA DLP
- Mitsubishi UD8550 7500 ANSI lumens

Projection screen front & retro 400cm x 225cm

## Misc.

- Genie AWP 30S single lift aerial platform
- 6 x Beltpack + headset ASL (from september 2022 - 4 x wireless posts Green-Go)

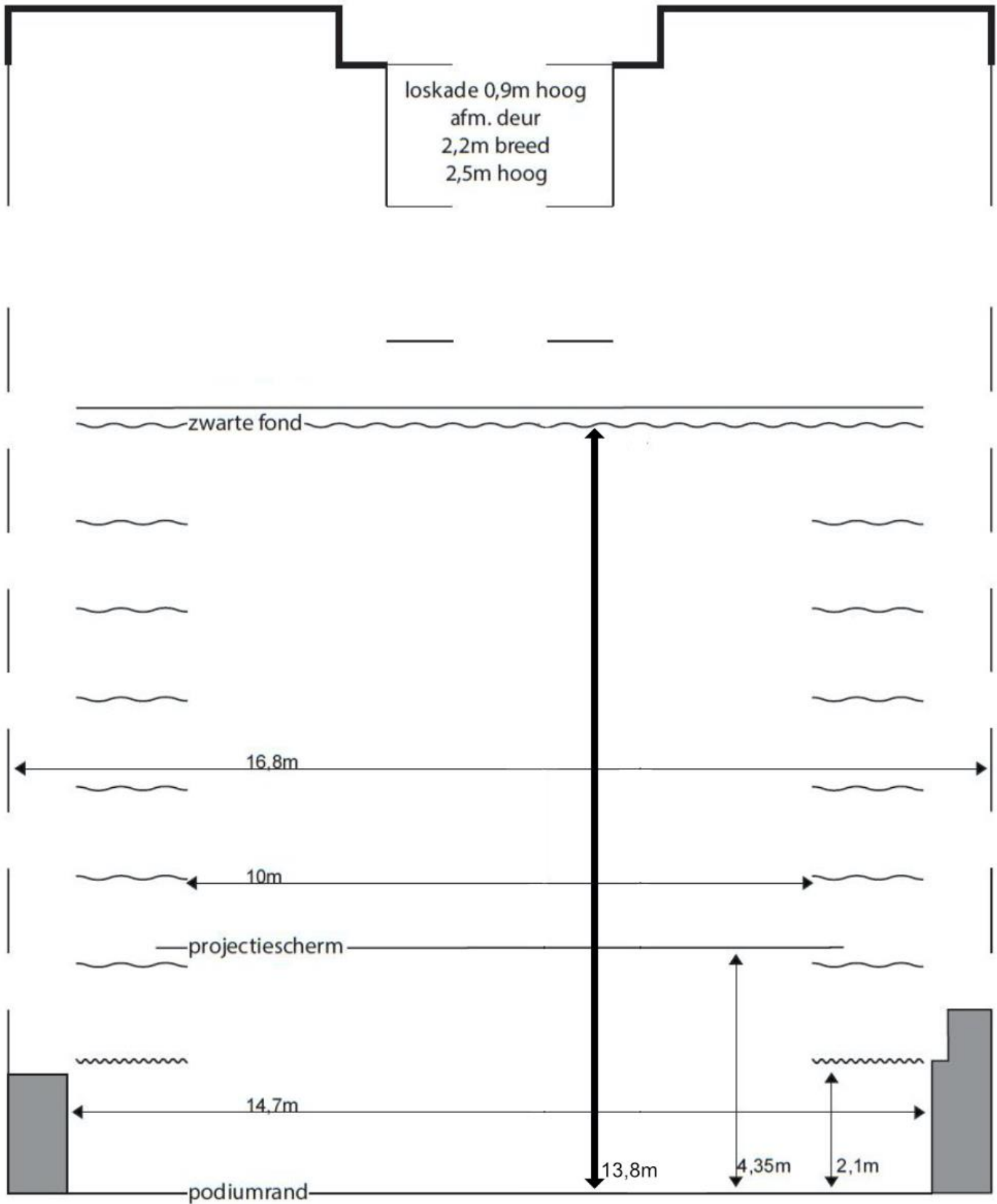
# Safety rules

- The use of special effects such as smoke, fog, pyrotechnics requires prior approval by a theater technician of De Leest.
- Flybars are only operated by a theater technician from De Leest.
- Cloths and set elements are only allowed if they are accompanied by a fire certificate.
- All set elements are self-contained and fully finished upon arrival.
- The technical areas, the stage and the dressing rooms are accessible only to persons who have to be there for service reasons and always under the supervision and direction of a theater technician from the "Leest".
- It is strictly forbidden to nail, plaster and/or paint the windows, doors, walls, panels, floors, etc. They may not be covered with any adhesive.
- The user may not occupy a greater number of seats than the capacity of the hall.
- Standing spectators or spectators on the stairs are not allowed.
- Emergency lighting may never be turned off or covered.
- Exits, emergency exits, fire extinguishers and emergency controls may not be obstructed.
- No beverages and/or food may be consumed in the grandstand.
- Drinks on stage are only allowed for the performers on stage during the performance.
- The Leest is a non-smoking building.
- Due to safety regulations, a theater technician from De Leest may stop the performance if these rules are not observed.

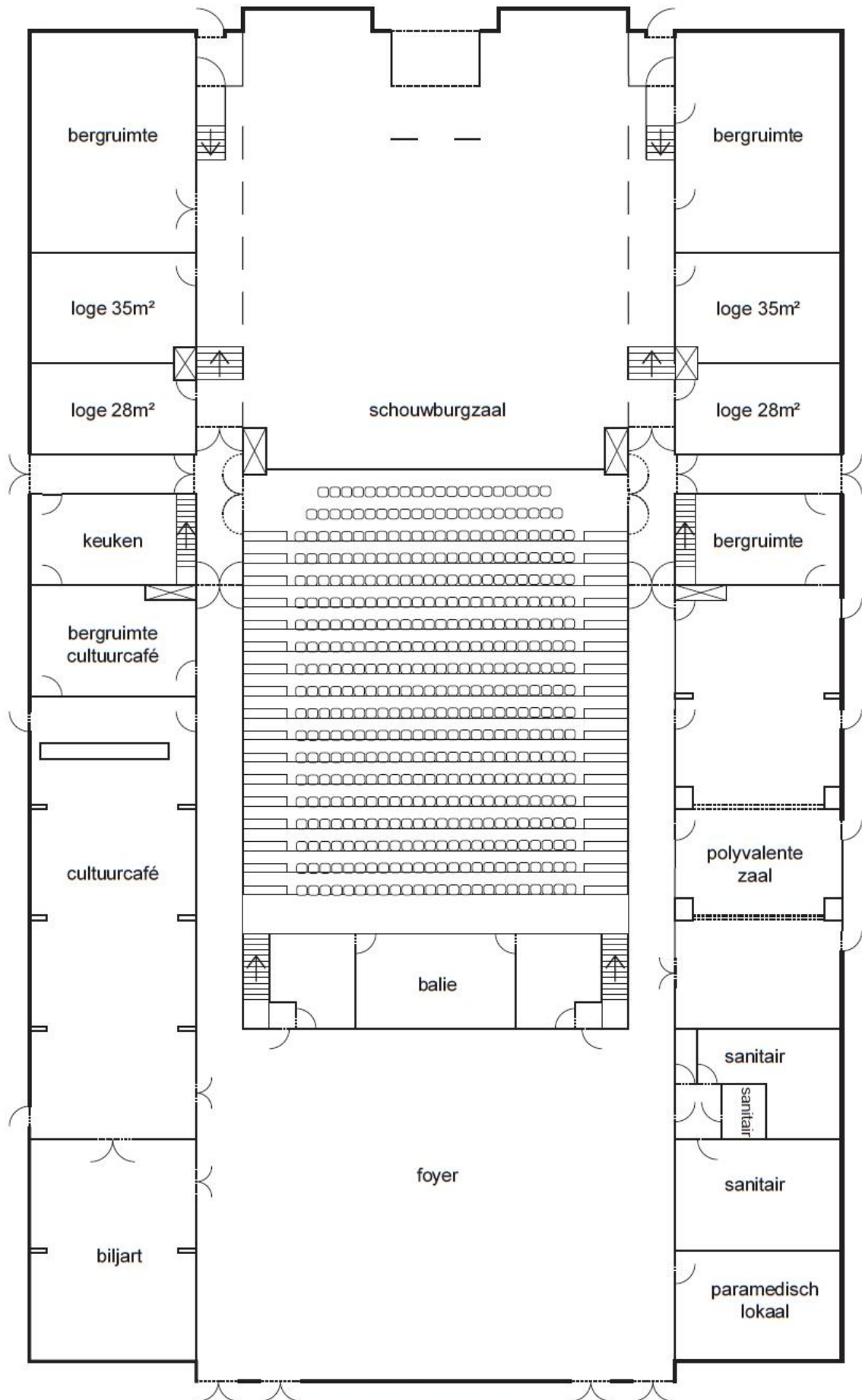
# Plan Flybars

Flybar	Distance to edge of the podium in meters	Max height	
1	0,30	6,6	
2	1,85	8,1	
3	2,10	12,9	Fries
VD	2,35	12,9	Front curtain
4	2,75	13,0	
5	3,15	13,0	
6	3,55	13,0	Fries
7	3,95	13,1	Legs
8	4,35	13,1	Retro projectionscreen
9	4,75	13,1	
10	5,15	13,2	Fries
11	5,55	13,2	Legs
12	5,95	13,2	
13	6,35	13,3	
14	6,75	13,3	Fries
15	7,15	13,4	Legs
16	7,55	13,4	
17	7,95	13,4	
18	8,35	13,5	Fries
19	8,75	13,5	Legs
20	9,15	13,5	
21	9,55	13,6	
22	9,95	13,6	Fries
23	10,35	13,7	Legs
24	10,75	13,7	
25	11,15	13,7	
26	11,55	13,8	Fries
27	11,95	13,8	Legs
28	12,35	13,8	
29	12,75	13,9	
30	13,15	13,9	
31	13,55	13,9	
32	13,80	14,0	Black Backdrop

# Stage



# Venue map





# Seatingplan

## ZETELPLAN SCHOUWBURGZAAL DE LEEST

S	1	2	3	4	5	6	7	8	9	10	11	12	13	14	15	16	17	18	19	20	21	22	23	24
R	1	2	3	4	5	6	7	8	9	10	11	12	13	14	15	16	17	18	19	20	21	22	23	24
Q	1	2	3	4	5	6	7	8	9	10	11	12	13	14	15	16	17	18	19	20	21	22	23	24
P	1	2	3	4	5	6	7	8	9	10	11	12	13	14	15	16	17	18	19	20	21	22	23	24
O	1	2	3	4	5	6	7	8	9	10	11	12	13	14	15	16	17	18	19	20	21	22	23	24
N	1	2	3	4	5	6	7	8	9	10	11	12	13	14	15	16	17	18	19	20	21	22	23	24
M	1	2	3	4	5	6	7	8	9	10	11	12	13	14	15	16	17	18	19	20	21	22	23	24
L	1	2	3	4	5	6	7	8	9	10	11	12	13	14	15	16	17	18	19	20	21	22	23	24
K	1	2	3	4	5	6	7	8	9	10	11	12	13	14	15	16	17	18	19	20	21	22	23	24
J	1	2	3	4	5	6	7	8	9	10	11	12	13	14	15	16	17	18	19	20	21	22	23	24
I	1	2	3	4	5	6	7	8	9	10	11	12	13	14	15	16	17	18	19	20	21	22	23	24
H	1	2	3	4	5	6	7	8	9	10	11	12	13	14	15	16	17	18	19	20	21	22	23	24
G	1	2	3	4	5	6	7	8	9	10	11	12	13	14	15	16	17	18	19	20	21	22	23	24
F	1	2	3	4	5	6	7	8	9	10	11	12	13	14	15	16	17	18	19	20	21	22	23	24
E	1	2	3	4	5	6	7	8	9	10	11	12	13	14	15	16	17	18	19	20	21	22	23	24
D	1	2	3	4	5	6	7	8	9	10	11	12	13	14	15	16	17	18	19	20	21	22	23	24
C	1	2	3	4	5	6	7	8	9	10	11	12	13	14	15	16	17	18	19	20	21	22	23	24
B	1	2	3	4	5	6	7	8	9	10	11	12	13	14	15	16	17	18	19	20	21	22	23	24
A	1	2	3	4	5	6	7	8	9	10	11	12	13	14	15	16	17	18	19	20	21	22	23	24